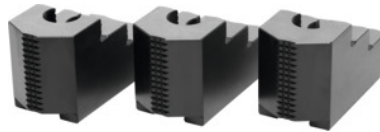




Stepped top jaws set, 3 pieces, for chuck type: 210



Order data

Order number	313470 210
GTIN	2050001929631
Item class	33T

Description

Version:

Precision milled slots and **precision ground** serrations, **burnished**.

Hardened.

Application:

For external and internal clamping.

Material:

Quality product made of 16MnCr5.

Suitable for :

Heavy-duty chucks from Schunk, Röhmm and other heavy-duty chuck manufacturers.

Optional extras:

T-nuts No. 313505 – 313605.

Note:

Hard top and stepped jaws purchased subsequently must be ground internally in the chuck for concentricity and runout.

- **When fitting to a chuck, please check serrations, slot width (D), and hole spacing (a, b).**
- **Aluminium top jaws on request.**

Length L: 84.3 mm

Width B: 40 mm

Height H: 49 mm

Hole centre spacing a: 28.7 mm

Bore spacing b: 19 mm

Slot width D: 17 mm

Technical description

Length L	84.3 mm
Hole centre spacing a	28.7 mm
for chuck type	210 mm
Height H	49 mm
Bore spacing b	19 mm
Slot width D	17 mm
Width B	40 mm
Type of product	Heavy-duty lathe chuck jaws