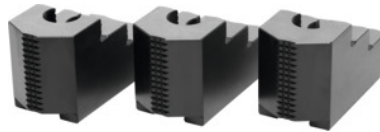




Stepped top jaws set, 3 pieces, for chuck type: 250



Order data

Order number	313470 250
GTIN	2050001929648
Item class	33T

Description

Version:

Precision milled slots and **precision ground** serrations, **burnished**.

Hardened.

Application:

For external and internal clamping.

Material:

Quality product made of 16MnCr5.

Suitable for :

Heavy-duty chucks from Schunk, Röhms and other heavy-duty chuck manufacturers.

Optional extras:

T-nuts No. 313505 – 313605.

Note:

Hard top and stepped jaws purchased subsequently must be ground internally in the chuck for concentricity and runout.

- **When fitting to a chuck, please check serrations, slot width (D), and hole spacing (a, b).**
- **Aluminium top jaws on request.**

Length L: 103.5 mm

Width B: 50 mm

Height H: 58 mm

Hole centre spacing a: 34 mm

Bore spacing b: 25 mm

Slot width D: 21 mm

Technical description

Height H	58 mm
Hole centre spacing a	34 mm
Length L	103.5 mm
Slot width D	21 mm
Bore spacing b	25 mm
Width B	50 mm
for chuck type	250 mm
Type of product	Heavy-duty lathe chuck jaws