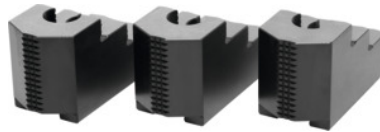




## Stepped top jaws set, 3 pieces, for chuck type: 315



### Order data

Order number	313470 315
GTIN	2050001929655
Item class	33T

### Description

#### Version:

**Precision milled** slots and **precision ground** serrations, **burnished**.

Hardened.

#### Application:

For external and internal clamping.

#### Material:

Quality product made of 16MnCr5.

#### Suitable for :

**Heavy-duty chucks** from Schunk, Röhms and other heavy-duty chuck manufacturers.

#### Optional extras:

T-nuts No. 313505 – 313605.

#### Note:

**Hard top and stepped jaws purchased subsequently must be ground internally in the chuck for concentricity and runout.**

- **When fitting to a chuck, please check serrations, slot width (D), and hole spacing (a, b).**
- **Aluminium top jaws on request.**

Length L: 128 mm

Width B: 50 mm

Height H: 58 mm

Hole centre spacing a: 46 mm

Bore spacing b: 30 mm

Slot width D: 21 mm

### Technical description

Length L	128 mm
Hole centre spacing a	46 mm
Height H	58 mm
Slot width D	21 mm
Width B	50 mm
Bore spacing b	30 mm
for chuck type	315 mm
Type of product	Heavy-duty lathe chuck jaws