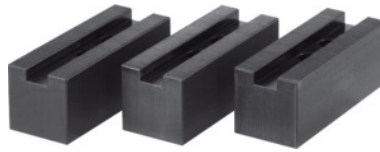




Top jaws set, 3 pieces, for chuck type: 315



Order data

Order number	313700 315
GTIN	4019208193694
Item class	33R

Description

Version:

Precision milled slots and serrations, **burnished**.

Material:

Quality product made of 16MnCr5.

Suitable for :

Heavy-duty chucks from Schunk, RöhM and other heavy-duty chuck manufacturers.

Optional extras:

T-nuts No. 313505 – 313605.

Note:

- **When fitting to a chuck, please check serrations, slot width (D), and hole spacing (a, b).**
- **Aluminium top jaws on request.**

suitable for colour code: Schunk heavy-duty chucks and jaws

Length L: 130 mm

Width B: 50 mm

Height H: 50 mm

Hole centre spacing a: 40 mm

Bore spacing b: 30 mm

Slot width D: 18 mm

Technical description

Width B	50 mm
for chuck type	315 mm
Hole centre spacing a	40 mm

Slot width D	18 mm
Bore spacing b	30 mm
Height H	50 mm
for thread DIN 912	M14
Length L	130 mm
suitable for colour code	Schunk heavy-duty chucks and jaws
Type of product	Heavy-duty lathe chuck jaws