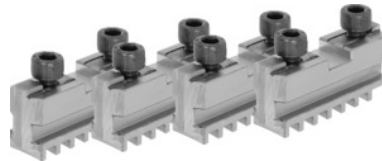




Base jaw set, 4 pieces, hardened, for chuck type: 160 mm



Order data

Order number	314100 160
GTIN	4019208034249
Item class	36R

Description

Application:

For fitting hardened reversible jaws or soft top jaws.

Suitable for :

Four-jaw lathe chucks No. 312000; 312500; 312700.

Note:

- **Jaws can generally be renewed in the chuck as long as the guide in the body is not worn out.**
- **Top, turning, and drilling jaws bought subsequently must be ground in the chuck for radial and axial run-out.**

suitable for colour code: RöhM geared scroll chucks and jaws

Length L: 65 mm

Slot width D +0.01: 12.68 mm

Tenon width B₁ -0.05: 7.94 mm

Thread: M8

Technical description

Length L	65 mm
for chuck type	160 mm
Slot width D +0.01	12.68 mm
Tenon width B ₁ -0.05	7.94 mm
Thread	M8

suitable for colour code	Röhm geared scroll chucks and jaws
Type of product	Gear scroll chuck jaws