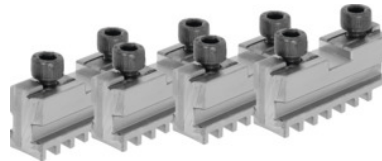




## Base jaw set, 4 pieces, hardened, for chuck type: 200 mm



### Order data

Order number	314100 200
GTIN	4019208034256
Item class	36R

### Description

#### Application:

For fitting hardened reversible jaws or soft top jaws.

#### Suitable for :

**Four-jaw lathe chucks No. 312000; 312500; 312700.**

#### Note:

- **Jaws can generally be renewed in the chuck as long as the guide in the body is not worn out.**
- **Top, turning, and drilling jaws bought subsequently must be ground in the chuck for radial and axial run-out.**

suitable for colour code: RöhM geared scroll chucks and jaws

Length L: 78 mm

Slot width D +0.01: 12.68 mm

Tenon width B<sub>1</sub> -0.05: 7.94 mm

Thread: M8

### Technical description

Length L	78 mm
for chuck type	200 mm
Slot width D +0.01	12.68 mm
Tenon width B <sub>1</sub> -0.05	7.94 mm
Thread	M8

suitable for colour code	Röhm geared scroll chucks and jaws
Type of product	Gear scroll chuck jaws