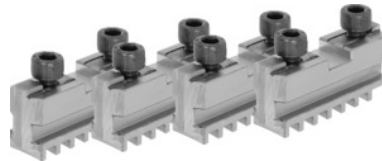




Base jaw set, 4 pieces, hardened, for chuck type: 250 mm



Order data

Order number	314100 250
GTIN	4019208034263
Item class	36R

Description

Application:

For fitting hardened reversible jaws or soft top jaws.

Suitable for :

Four-jaw lathe chucks No. 312000; 312500; 312700.

Note:

- **Jaws can generally be renewed in the chuck as long as the guide in the body is not worn out.**
- **Top, turning, and drilling jaws bought subsequently must be ground in the chuck for radial and axial run-out.**

suitable for colour code: RöhM geared scroll chucks and jaws

Length L: 92 mm

Slot width D +0.01: 19.03 mm

Tenon width B₁ -0.05: 12.7 mm

Thread: M12

Technical description

for chuck type	250 mm
Length L	92 mm
Slot width D +0.01	19.03 mm
Tenon width B ₁ -0.05	12.7 mm
Thread	M12

suitable for colour code	Röhm geared scroll chucks and jaws
Type of product	Gear scroll chuck jaws