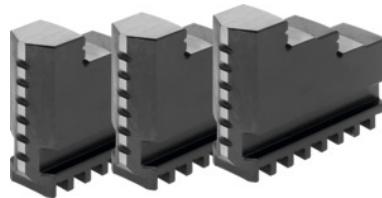




Inside jaw set, 3 pieces, hardened, for chuck type: 250



Order data

Order number	315000 250
GTIN	4019208038780
Item class	36R

Description

Suitable for :

Three-jaw lathe chucks No. 310100; 310500; 310600; 310650; 310670; 310700; 310750.

Note:

- Jaws can generally be renewed in the chuck as long as the guide in the body is not worn out.
- Top, turning, and drilling jaws bought subsequently must be ground in the chuck for radial and axial run-out.

suitable for colour code: Röhm geared scroll chucks and jaws

Length L: 90 mm

Width B: 24 mm

Height H: 67.5 mm

Technical description

for chuck type	250 mm
Length L	90 mm
Height H	67.5 mm
Width B	24 mm
suitable for colour code	Röhm geared scroll chucks and jaws
Type of product	Gear scroll chuck jaws

