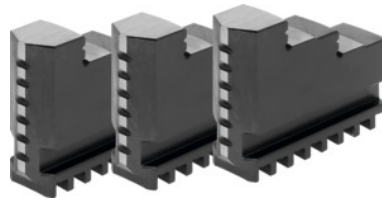




## Inside jaw set, 3 pieces, hardened, for chuck type: 80



### Order data

Order number	315000 80
GTIN	4019208038728
Item class	36R

### Description

#### Suitable for :

Three-jaw lathe chucks No. 310100; 310500; 310600; 310650; 310670; 310700; 310750.

#### Note:

- Jaws can generally be renewed in the chuck as long as the guide in the body is not worn out.
- Top, turning, and drilling jaws bought subsequently must be ground in the chuck for radial and axial run-out.

Clamping face smooth, not serrated.

suitable for colour code: RöhM geared scroll chucks and jaws

Length L: 37 mm

Width B: 12 mm

Height H: 26 mm

### Technical description

Length L	37 mm
for chuck type	80 mm
Width B	12 mm
Height H	26 mm
suitable for colour code	RöhM geared scroll chucks and jaws
Type of product	Gear scroll chuck jaws

