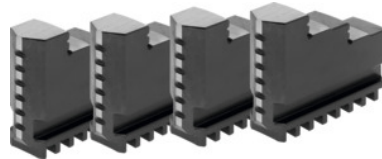




## Inside jaw set, 4 pieces, hardened, for chuck type: 200



### Order data

Order number	315100 200
GTIN	4019208038506
Item class	36R

### Description

#### Suitable for :

Four-jaw lathe chucks No. 312000; 312500; 312700.

#### Note:

- Jaws can generally be renewed in the chuck as long as the guide in the body is not worn out.
- Top, turning, and drilling jaws bought subsequently must be ground in the chuck for radial and axial run-out.

suitable for colour code: Röhm geared scroll chucks and jaws

Length L: 69 mm

Width B: 20 mm

Height H: 53.5 mm

### Technical description

Width B	20 mm
Length L	69 mm
for chuck type	200 mm
Height H	53.5 mm
suitable for colour code	Röhm geared scroll chucks and jaws
Type of product	Gear scroll chuck jaws

