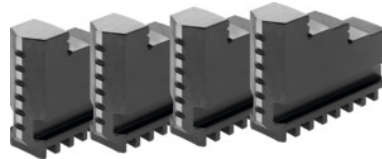




## Inside jaw set, 4 pieces, hardened, for chuck type: 250



### Order data

Order number	315100 250
GTIN	4019208038513
Item class	36R

### Description

#### Suitable for :

**Four-jaw lathe chucks No. 312000; 312500; 312700.**

#### Note:

- **Jaws can generally be renewed in the chuck as long as the guide in the body is not worn out.**
- **Top, turning, and drilling jaws bought subsequently must be ground in the chuck for radial and axial run-out.**

suitable for colour code: Röhm geared scroll chucks and jaws

Length L: 90 mm

Width B: 24 mm

Height H: 67.5 mm

### Technical description

Height H	67.5 mm
for chuck type	250 mm
Length L	90 mm
Width B	24 mm
suitable for colour code	Röhm geared scroll chucks and jaws
Type of product	Gear scroll chuck jaws

