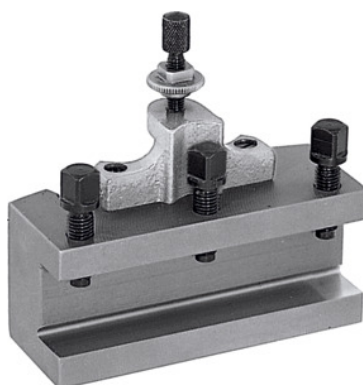




## Quick-change turning toolholder, Type: A16/75



### Order data

Order number	318100 A16/75
GTIN	4045197315731
Item class	36A

### Description

#### Version:

With flat tool base. Equipped with locking height adjustment screw and 3 tool clamping screws.

#### Note:

When ordering spare parts No. 318110 – 318130 please state the spare part number and the size of the quick-change lathe tool post A, B or C.

Suitable for No. 318000: A

Height of the toolholder: 16 mm

Length: 75 mm

Thickness of tool support W: 8.75 mm

### Technical description

Length	75 mm
Thickness of tool support W	8.75 mm
Type	A16/75
Height of the toolholder	16 mm
Suitable for No. 318000	A

Type of product

Steel toolholder