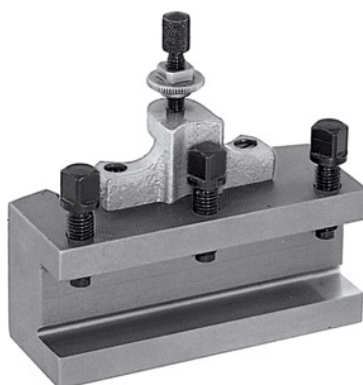




## Quick-change turning toolholder, Type: A16/90



### Order data

Order number	318100 A16/90
GTIN	4045197315748
Item class	36A

### Description

#### Version:

With flat tool base. Equipped with locking height adjustment screw and 3 tool clamping screws.

#### Note:

When ordering spare parts No. 318110 – 318130 please state the spare part number and the size of the quick-change lathe tool post A, B or C.

Suitable for No. 318000: A

Height of the toolholder: 16 mm

Length: 90 mm

Thickness of tool support W: 8.75 mm

### Technical description

Type	A16/90
Height of the toolholder	16 mm
Thickness of tool support W	8.75 mm
Suitable for No. 318000	A
Length	90 mm

Type of product

Steel toolholder