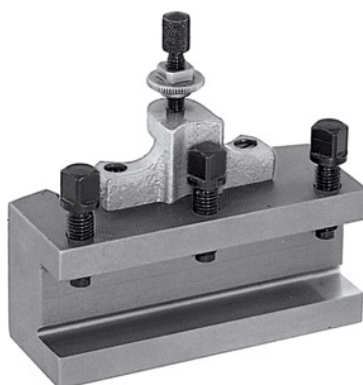




## Quick-change turning toolholder, Type: A20/90



### Order data

Order number	318100 A20/90
GTIN	4045197315762
Item class	36A

### Description

#### Version:

With flat tool base. Equipped with locking height adjustment screw and 3 tool clamping screws.

#### Note:

When ordering spare parts No. 318110 – 318130 please state the spare part number and the size of the quick-change lathe tool post A, B or C.

Suitable for No. 318000: A

Height of the toolholder: 20 mm

Length: 90 mm

Thickness of tool support W: 10 mm

### Technical description

Height of the toolholder	20 mm
Type	A20/90
Suitable for No. 318000	A
Thickness of tool support W	10 mm
Length	90 mm

Type of product

Steel toolholder