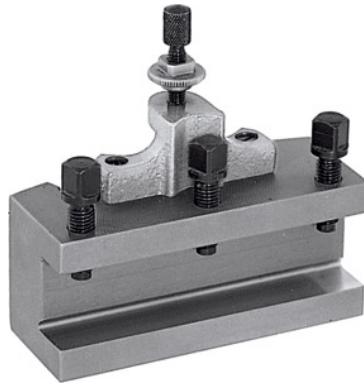




Quick-change turning toolholder, Type: AA12/50



Order data

Order number	318100 AA12/50
GTIN	4045197315724
Item class	36A

Description

Version:

With flat tool base. Equipped with locking height adjustment screw and 3 tool clamping screws.

Note:

When ordering spare parts No. 318110 – 318130 please state the spare part number and the size of the quick-change lathe tool post A, B or C.

Suitable for No. 318000: AA

Height of the toolholder: 12 mm

Length: 50 mm

Thickness of tool support W: 6 mm

Technical description

Suitable for No. 318000	AA
Thickness of tool support W	6 mm
Type	AA12/50
Length	50 mm
Height of the toolholder	12 mm

Type of product

Steel toolholder