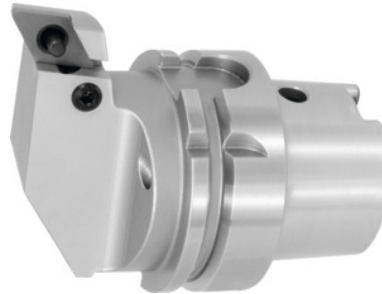


SWISS TOOLS

## Lever-lock toolholder left-hand, HSK-T, Shank Ø / insert size: 63/15HP mm



### Order data

Order number	320036 63/15HP
GTIN	2050001772534
Item class	36D

### Description

#### Note:

Order the suitable **HP nozzle** No. 320001 separately. Spare parts No. 320610 – 320626 can be found in the spare parts list.

PSC clamping stud on request.

Through-coolant: yes

Overhang dimension A: 70 mm

Minimum pre-drill Ø D<sub>1</sub> min: 80 mm

Axis tip distance f: 45 mm

suitable indexable insert: DN.. 1506..

Spare part: P05

### Technical description

Spare part	P05
Minimum pre-drill Ø D <sub>1</sub> min	80 mm
Insert size	15
Axis tip distance f	45 mm
suitable indexable insert	DN.. 1506..
Overhang dimension A	70 mm

Shank Ø	63 mm
Adapter	HSK-T
Application type	left-hand
Arbor standard	ISO 12164-3
Through-coolant	yes
Shank type	Hollow shank taper
Type of product	Boring bar

## Accessories

Intermediate spacer No. 1 Type D07	320610 D07
Tube pin No. 7 Type P02	320618 P02
Clamping screw No. 3 Type P02	320611 P02
Clamping screw No. 3 Type P06	320611 P06
Intermediate spacer No. 1 Type P02	320610 P02
Torx-screw No. 2 Type 2	320624 2
Toggle lever No. 4 Type P01	320612 P01
Intermediate spacer No. 1 Type P06	320610 P06
Tube pin No. 7 Type P04	320618 P04
Intermediate spacer No. 1 Type P04	320610 P04
Intermediate spacer No. 1 Type P05	320610 P05
Toggle lever No. 4 Type P04	320612 P04
Intermediate spacer No. 1 Type P01	320610 P01
Torx-screw No. 2 Type 2	320626 2
Torx-screw No. 2 Type 2	320620 2
Clamping screw No. 3 Type D07	320611 D07
Clamp No. 6 Type D07	320614 D07
Nozzle ring No. 5 Type D07	320613 D07
Toggle lever No. 4 Type P06	320612 P06

Toggle lever No. 4 Type P02	320612 P02
Tube pin No. 7 Type P06	320618 P06
Tube pin No. 7 Type P01	320618 P01
Clamping screw No. 3 Type P01	320611 P01
High-pressure cooling nozzle (HP) Type 63	320001 63
Toggle lever No. 4 Type P05	320612 P05
Tube pin No. 7 Type P05	320618 P05
Clamping screw No. 3 Type P05	320611 P05
Clamping screw No. 3 Type P04	320611 P04