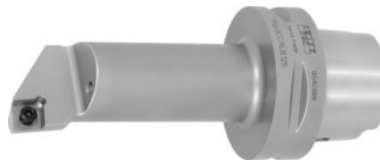


SWISS TOOLS

Screw-on boring bar right-hand, HSK-T, Shank \varnothing / insert size – A dimension: 40/12-110 mm



Order data

| | |
|--------------|------------------|
| Order number | 320085 40/12-110 |
| GTIN | 2050001714985 |
| Item class | 36D |

Description

Note:

Appropriate spare parts No. 320610 – 320626 can be found in the spare parts list.

Through-coolant: yes

Overhang dimension A: 110 mm

Minimum pre-drill $\varnothing D_1$ min: 32 mm

Axis tip distance f: 22 mm

suitable indexable insert: CC.. 1204..

Spare part: S01

Technical description

| | |
|---|-------------|
| Spare part | S01 |
| suitable indexable insert | CC.. 1204.. |
| Axis tip distance f | 22 mm |
| Insert size | 12 |
| Overhang dimension A | 110 mm |
| Minimum pre-drill $\varnothing D_1$ min | 32 mm |
| Shank \varnothing | 40 mm |
| Usable length L_N | 90 mm |
| Adapter | HSK-T |

| | |
|------------------------|--------------------|
| Application type | right-hand |
| Arbor standard | ISO 12164-3 |
| Through-coolant | yes |
| Setting angle κ | 95 degrees |
| Shank type | Hollow shank taper |
| Type of product | boring bar holder |

Accessories

| | |
|------------------------------------|------------|
| Clamping screw No. 3 Type P05 | 320611 P05 |
| Torx-screw No. 2 Type 2 | 320626 2 |
| Clamping screw No. 3 Type P06 | 320611 P06 |
| Intermediate spacer No. 1 Type P05 | 320610 P05 |
| Toggle lever No. 4 Type P05 | 320612 P05 |
| Tube pin No. 7 Type P01 | 320618 P01 |
| Tube pin No. 7 Type P02 | 320618 P02 |
| Intermediate spacer No. 1 Type P06 | 320610 P06 |
| Clamping screw No. 3 Type P04 | 320611 P04 |
| Intermediate spacer No. 1 Type P01 | 320610 P01 |
| Clamping screw No. 3 Type P02 | 320611 P02 |
| Intermediate spacer No. 1 Type P04 | 320610 P04 |
| Clamping screw No. 3 Type D07 | 320611 D07 |
| Toggle lever No. 4 Type P06 | 320612 P06 |
| Torx-screw No. 2 Type 2 | 320620 2 |
| Clamp No. 6 Type D07 | 320614 D07 |
| Intermediate spacer No. 1 Type P02 | 320610 P02 |
| Nozzle ring No. 5 Type D07 | 320613 D07 |
| Toggle lever No. 4 Type P02 | 320612 P02 |
| Toggle lever No. 4 Type P01 | 320612 P01 |

| | |
|---|------------|
| Tube pin No. 7 Type P05 | 320618 P05 |
| Intermediate spacer No. 1 Type D07 | 320610 D07 |
| Tube pin No. 7 Type P04 | 320618 P04 |
| Torx-screw No. 2 Type 2 | 320624 2 |
| Toggle lever No. 4 Type P04 | 320612 P04 |
| Clamping screw No. 3 Type P01 | 320611 P01 |
| Tube pin No. 7 Type P06 | 320618 P06 |
| High-pressure cooling nozzle (HP) Type 63 | 320001 63 |