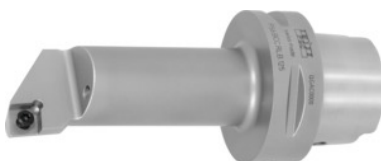


SWISS TOOLS

## Screw-on boring bar right-hand, HSK-T, Shank $\varnothing$ / insert size – A dimension: 63/12-140 mm



### Order data

Order number	320085 63/12-140
GTIN	2050001715012
Item class	36D

### Description

#### Note:

Appropriate spare parts No. 320610 – 320626 can be found in the spare parts list.

Through-coolant: yes

Overhang dimension A: 140 mm

Minimum pre-drill  $\varnothing D_1$  min: 50 mm

Axis tip distance f: 27 mm

suitable indexable insert: CC.. 1204..

Spare part: S01

### Technical description

Overhang dimension A	140 mm
suitable indexable insert	CC.. 1204..
Spare part	S01
Axis tip distance f	27 mm
Minimum pre-drill $\varnothing D_1$ min	50 mm
Insert size	12
Shank $\varnothing$	63 mm
Usable length $L_N$	114 mm
Adapter	HSK-T

Application type	right-hand
Arbor standard	ISO 12164-3
Through-coolant	yes
Setting angle $\kappa$	95 degrees
Shank type	Hollow shank taper
Type of product	boring bar holder

## Accessories

Tube pin No. 7 Type P06	320618 P06
Intermediate spacer No. 1 Type P05	320610 P05
Clamping screw No. 3 Type D07	320611 D07
Clamping screw No. 3 Type P01	320611 P01
Tube pin No. 7 Type P02	320618 P02
Toggle lever No. 4 Type P04	320612 P04
Clamping screw No. 3 Type P06	320611 P06
Intermediate spacer No. 1 Type P04	320610 P04
Torx-screw No. 2 Type 2	320626 2
High-pressure cooling nozzle (HP) Type 63	320001 63
Nozzle ring No. 5 Type D07	320613 D07
Tube pin No. 7 Type P05	320618 P05
Toggle lever No. 4 Type P01	320612 P01
Tube pin No. 7 Type P04	320618 P04
Intermediate spacer No. 1 Type D07	320610 D07
Clamping screw No. 3 Type P04	320611 P04
Torx-screw No. 2 Type 2	320624 2
Torx-screw No. 2 Type 2	320620 2
Toggle lever No. 4 Type P05	320612 P05
Tube pin No. 7 Type P01	320618 P01

Clamp No. 6 Type D07	320614 D07
Toggle lever No. 4 Type P02	320612 P02
Intermediate spacer No. 1 Type P01	320610 P01
Toggle lever No. 4 Type P06	320612 P06
Clamping screw No. 3 Type P02	320611 P02
Intermediate spacer No. 1 Type P02	320610 P02
Intermediate spacer No. 1 Type P06	320610 P06
Clamping screw No. 3 Type P05	320611 P05