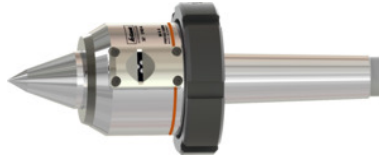


## Garant

### Revolving lathe centre with analogue pressure indicator and extended point, Morse taper: 4



#### Order data

Order number	321740 4
GTIN	4045197947901
Item class	31Z

#### Description

##### Version:

- The momentary clamping pressure is directly readable on the analogue or digital display on the base body.
- The live centre is supported by a disc spring pack with a spring travel of approx. 3.7 mm analogue and 2.6 mm or 2.8 mm digital.
- Short sturdy design with active longitudinal axis. Live centre through hardened and finish ground.
- Maximum accuracy due to precision roller bearings.
- With push-off thread and push-off nut.
- With special seal against dirt and coolant ingress, maintenance-free due to lifetime lubrication.

With extended centre, point angle 60°/40°.

##### Function:

IP55: Protected against jets of water from all directions and protected against penetration of dust into the inside (protected against dust), also completely protected against touching.

##### Application:

Whenever **the clamping force should be kept within certain limits**, either to prevent deformation of the component or to ensure secure clamping with sufficient pressure.

- **As a tailstock centre in conjunction with hydro-mechanical face drivers No. 327450 – 327540 because the drive teeth have to dig into the component.**
- **For components that expand significantly due to high machining heat.**
- **For clamping long slender components to prevent lateral displacement.**
- **For clamping heavy components where a controlled clamping force is required.**

IP Index of Protection: IP 55

Power supply: energy-harvesting  
Body Ø: 68 mm  
Reach B: 131 mm  
largest centre point Ø 60° A: 35 mm  
largest centre point Ø 40° A: 14 mm  
maximum radial run-out: 0.005 mm  
Centre point length C: 48 mm

## Technical description

Body Ø	68 mm
maximum radial run-out	0.005 mm
maximum axial clamping force	1000 daN
Morse taper	4
Reach B	131 mm
for workpiece weight	500 kg
largest centre point Ø 60° A	35 mm
Centre point length C	48 mm
largest centre point Ø 40° A	14 mm
IP Index of Protection	IP 55
Power supply	energy-harvesting
Type of product	Centring drill