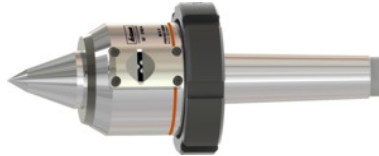


## Garant

### Revolving lathe centre with analogue pressure indicator and extended point, Morse taper: 5



#### Order data

Order number	321740 5
GTIN	4045197947918
Item class	31Z

#### Description

##### Version:

- **The momentary clamping pressure is directly readable on the analogue or digital display on the base body.**
- **The live centre is supported by a disc spring pack with a spring travel of approx. 3.7 mm analogue and 2.6 mm or 2.8 mm digital.**
- **Short sturdy design with active longitudinal axis. Live centre through hardened and finish ground.**
- **Maximum accuracy due to precision roller bearings.**
- **With push-off thread and push-off nut.**
- **With special seal against dirt and coolant ingress, maintenance-free due to lifetime lubrication.**

**With extended centre**, point angle 60°/40°.

##### Description:

Lathe centres are mainly used on lathes to support long and slim workpieces, since with these workpieces there would otherwise be a risk of the workpiece bending or moving around as a result of the forces generated.

The lathe centre is secured with a Morse taper. The workpiece is clamped in the chuck and a counterbore is added using a centre drill. After re-clamping, the lathe centre is then inserted.

##### Function:

IP55: Protected against jets of water from all directions and protected against penetration of dust into the inside (protected against dust), also completely protected against touching.

##### Application:

Whenever **the clamping force should be kept within certain limits**, either to prevent deformation of the component or to ensure secure clamping with sufficient pressure.

- **As a tailstock centre in conjunction with hydro-mechanical face drivers No. 327450 – 327540 because the drive teeth have to dig into the component.**
- **For components that expand significantly due to high machining heat.**
- **For clamping long slender components to prevent lateral displacement.**
- **For clamping heavy components where a controlled clamping force is required.**

IP Index of Protection: IP 55

Power supply: energy-harvesting

Body Ø: 92 mm

Reach B: 162 mm

largest centre point Ø 60° A: 50 mm

largest centre point Ø 40° A: 18 mm

maximum radial run-out: 0.005 mm

Centre point length C: 67 mm

## Technical description

for workpiece weight	800 kg
maximum radial run-out	0.005 mm
Centre point length C	67 mm
Reach B	162 mm
Morse taper	5
maximum axial clamping force	1430 daN
largest centre point Ø 60° A	50 mm
Body Ø	92 mm
largest centre point Ø 40° A	18 mm
IP Index of Protection	IP 55
Power supply	energy-harvesting
Type of product	Centring drill