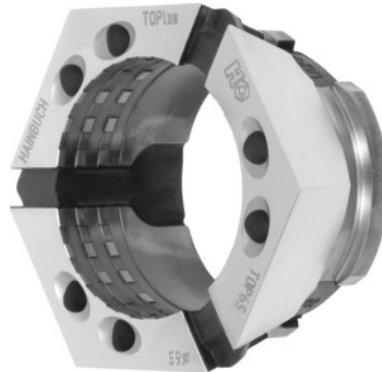




## Clamping head with transverse and longitudinal serrations, Top 65, Clamping $\varnothing$ (0.5 mm increments): 15 mm



### Order data

Order number	329974 15
GTIN	2050001927392
Item class	33H

### Description

#### Version:

Clamping heads, **round profile, in 0.5 mm increments. Please specify required clamping  $\varnothing$  with order.**

With transverse and longitudinal serrations for raw material.

#### Advantage:

- **25% greater clamping force than clamping head RD.**
- **No radial movement between clamping head and clamping element mounting, therefore immune to dirt.**
- **Unique stiffness due to large seating area of the clamping segments.**

#### Application:

Versatile application range, machining centres, measuring machines or pallet clamping.

#### Recommendation:

**Clamping heads for special profiles to your individual requirements on request.**

#### Note:

Other taper sizes and shapes (e.g. square) and machinable blanks **on request!**

### Technical description

Clamping Ø	15 mm
Hardness	60 HR
Profile	round
Clamping face	Transverse and longitudinal serrations
Length L	49 mm
Adapter	Top 65
Type of product	Clamping head