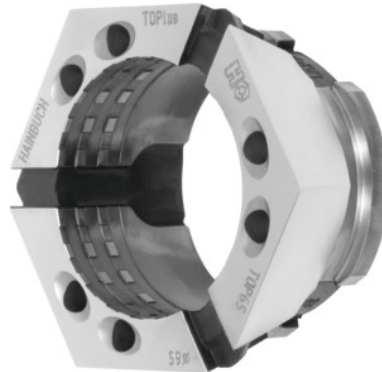




Clamping head with transverse and longitudinal serrations, Top 65, Clamping \varnothing (0.5 mm increments): 30 mm



Order data

| | |
|--------------|---------------|
| Order number | 329974 30 |
| GTIN | 2050001927699 |
| Item class | 33H |

Description

Version:

Clamping heads, **round profile, in 0.5 mm increments. Please specify required clamping \varnothing with order.**

With transverse and longitudinal serrations for raw material.

Advantage:

- **25% greater clamping force than clamping head RD.**
- **No radial movement between clamping head and clamping element mounting, therefore immune to dirt.**
- **Unique stiffness due to large seating area of the clamping segments.**

Application:

Versatile application range, machining centres, measuring machines or pallet clamping.

Recommendation:

Clamping heads for special profiles to your individual requirements on request.

Note:

Other taper sizes and shapes (e.g. square) and machinable blanks **on request!**

Technical description

| | |
|-----------------|--|
| Clamping Ø | 30 mm |
| Hardness | 60 HR |
| Clamping face | Transverse and longitudinal serrations |
| Profile | round |
| Length L | 49 mm |
| Adapter | Top 65 |
| Type of product | Clamping head |