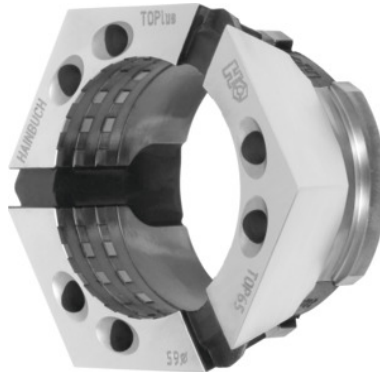




Clamping head with transverse and longitudinal serrations, Top 65, Clamping \varnothing (0.5 mm increments): 41 mm



Order data

Order number	329974 41
GTIN	2050001927910
Item class	33H

Description

Version:

Clamping heads, **round profile, in 0.5 mm increments. Please specify required clamping \varnothing with order.**

With transverse and longitudinal serrations for raw material.

Advantage:

- **25% greater clamping force than clamping head RD.**
- **No radial movement between clamping head and clamping element mounting, therefore immune to dirt.**
- **Unique stiffness due to large seating area of the clamping segments.**

Application:

Versatile application range, machining centres, measuring machines or pallet clamping.

Recommendation:

Clamping heads for special profiles to your individual requirements on request.

Note:

Other taper sizes and shapes (e.g. square) and machinable blanks **on request!**

Technical description

Clamping Ø	41 mm
Clamping face	Transverse and longitudinal serrations
Hardness	60 HR
Profile	round
Length L	49 mm
Adapter	Top 65
Type of product	Clamping head