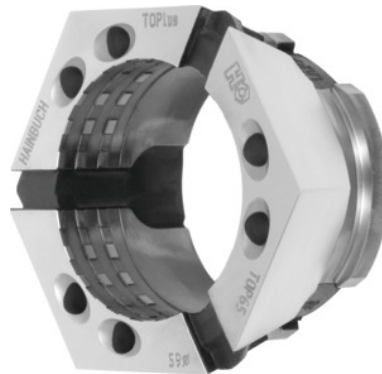




## Clamping head with transverse and longitudinal serrations, Top 65, Clamping $\varnothing$ (0.5 mm increments): 63 mm



### Order data

|              |               |
|--------------|---------------|
| Order number | 329974 63     |
| GTIN         | 2050001928351 |
| Item class   | 33H           |

### Description

#### Version:

Clamping heads, **round profile, in 0.5 mm increments. Please specify required clamping  $\varnothing$  with order.**

With transverse and longitudinal serrations for raw material.

#### Advantage:

- **25% greater clamping force than clamping head RD.**
- **No radial movement between clamping head and clamping element mounting, therefore immune to dirt.**
- **Unique stiffness due to large seating area of the clamping segments.**

#### Application:

Versatile application range, machining centres, measuring machines or pallet clamping.

#### Recommendation:

**Clamping heads for special profiles to your individual requirements on request.**

#### Note:

Other taper sizes and shapes (e.g. square) and machinable blanks **on request!**

### Technical description

|                 |  |
|-----------------|--|
| Clamping Ø      | 63 mm                                  |
| Hardness        | 60 HR                                  |
| Profile         | round                                  |
| Clamping face   | Transverse and longitudinal serrations |
| Length L        | 49 mm                                  |
| Adapter         | Top 65                                 |
| Type of product | Clamping head                          |