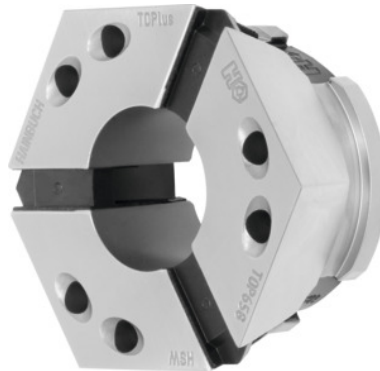



Clamping head soft, Top 65, Initial bore Ø: 40 mm


Order data

Order number	329976 40
GTIN	2050001928436
Item class	33H

Description

Version:

Clamping heads, **round profile, in 0.5 mm increments. Please specify required clamping Ø with order.**

Soft (reduced hardness of 40 HRC in the bore) for boring out.

Advantage:

- **25% greater clamping force than clamping head RD.**
- **No radial movement between clamping head and clamping element mounting, therefore immune to dirt.**
- **Unique stiffness due to large seating area of the clamping segments.**

Application:

Versatile application range: machining centres, measuring machines, and pallet clamping.

Recommendation:

Clamping heads for special profiles to your individual requirements on request.

Note:

Other taper sizes and shapes (e.g. square) and machinable blanks **on request!**

Technical description

Initial bore Ø	40 mm
----------------	-------

Profile	Hexagon
Hardness	60 HR
Length L	49 mm
Adapter	Top 65
Type of product	Clamping head