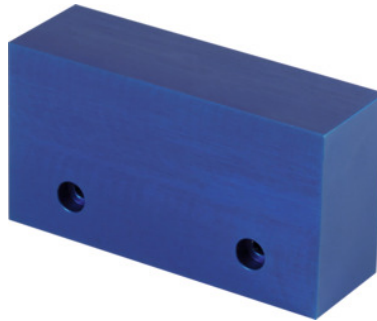


**Garant****Front jaw, Jaw width / Material: 80ALU mm****Order data**

Order number	360090 80ALU
GTIN	4045197482518
Item class	310

**Description****Application:**

For clamping individual workpiece contours.

**Suitable for :**

Parallel clamping jaw No. 360085 and fixed jaw No. 360086.

Length: 90 mm

Height: 49 mm

Width: 29 mm

**Technical description**

Material	Aluminium
Width	29 mm
Jaw width	80 mm
Length	90 mm
Height	49 mm
Type of product	Multi-point clamping rail

