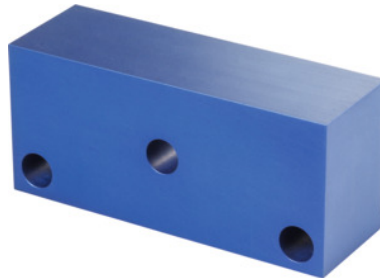


Garant**Aluminium top jaw, Jaw width: 120 mm****Order data**

Order number	360122 120
GTIN	4045197555526
Item class	310

Description**Application:**

For clamping individual workpiece contours.

Suitable for :

Parallel clamping jaw No. 360115 and fixed jaw No. 360116.

Version: Aluminium

Technical description

Jaw width	120 mm
Version	Aluminium
Type of product	Multi-point clamping rail