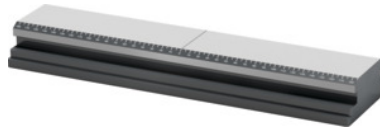


**Garant**
**Base rail, Type: 360**

**Order data**

Order number	361115 360
GTIN	4045197848956
Item class	310

**Description**
**Version:**

Fully hardened and ground. Laser engraved scale for prepositioning the clamping claws. Side groove for steplessly adjustable clamps and transverse slots for alignment on the machine table. The 5-axis vice has a modular design. The key components are the clamping modules No. 361105 – 361110, base rails No. 361115, spindle No. 361119, spindle extensions No. 361120 and the top jaws No. 361123 – 361136.

**Suitable for :**

Clamping modules No. 361105 – 361110.

**Optional extras:**

Clamping claws No. 361165, adapter plate for GARANT ZeroClamp No. 361170, clamping studs No. 360025 size 18M16 and size 18M16/138.

**Note:**

See No. 375365 for suitable T-nuts.

GARANT ZeroClamp holes available on request from size 650.

Version: Zero-point clamping system

Length L: 362 mm

Width B: 100 mm

Height H: 40 mm

Weight: 8.5 kg

Number of ZC holes: 2

suitable for colour code: Xpent0

**Technical description**

Height H	40 mm
----------	-------

Width B	100 mm
Weight	8.5 kg
Number of ZC holes	2
Length L	362 mm
suitable for colour code	Xpent0
Series	Xpent
Version	Zero-point clamping system
Type of product	Vice accessories

## Accessories

Stepped tenon ground Slot size b1 of the machine 16 mm	375365 16
Stepped tenon ground Slot size b1 of the machine 12 mm	375365 12
Adapter plate for type 360	361170 360
Stepped tenon ground Slot size b1 of the machine 24 mm	375365 24
Stepped tenon ground Slot size b1 of the machine 10 mm	375365 10
Clamping claw Type CS	361165 CS
Stepped tenon ground Slot size b1 of the machine 18 mm	375365 18
Clamping claw Type CS0	361165 CS0
Clamping claw Type CS1	361165 CS1
Stepped tenon ground Slot size b1 of the machine 14 mm	375365 14
Stepped tenon ground Slot size b1 of the machine 22 mm	375365 22
Stepped tenon ground Slot size b1 of the machine 28 mm	375365 28
ZeroClamp clamping stud with internal thread Type 18M16/138	360025 18M16/138
ZeroClamp clamping stud with internal thread Type 18M16	360025 18M16