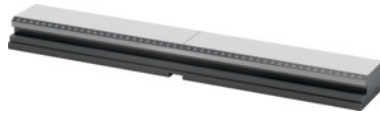


Garant
Base rail, Type: 520

Order data

| | |
|--------------|---------------|
| Order number | 361115 520 |
| GTIN | 4045197848970 |
| Item class | 310 |

Description
Version:

Fully hardened and ground. Laser engraved scale for prepositioning the clamping claws. Side groove for steplessly adjustable clamps and transverse slots for alignment on the machine table. The 5-axis vice has a modular design. The key components are the clamping modules No. 361105 – 361110, base rails No. 361115, spindle No. 361119, spindle extensions No. 361120 and the top jaws No. 361123 – 361136.

Suitable for :

Clamping modules No. 361105 – 361110.

Optional extras:

Clamping claws No. 361165, adapter plate for GARANT ZeroClamp No. 361170, clamping studs No. 360025 size 18M16 and size 18M16/138.

Note:

See No. 375365 for suitable T-nuts.

GARANT ZeroClamp holes available on request from size 650.

Version: Zero-point clamping system

Length L: 522 mm

Width B: 100 mm

Height H: 40 mm

Weight: 12.5 kg

Number of ZC holes: 3

suitable for colour code: Xpent0

Technical description

| | |
|----------|--------|
| Length L | 522 mm |
|----------|--------|

| | |
|--------------------------|----------------------------|
| Number of ZC holes | 3 |
| Width B | 100 mm |
| Height H | 40 mm |
| Weight | 12.5 kg |
| suitable for colour code | Xpent0 |
| Series | Xpent |
| Version | Zero-point clamping system |
| Type of product | Vice accessories |

Accessories

| | |
|---|------------------|
| Stepped tenon ground Slot size b1 of the machine 16 mm | 375365 16 |
| Stepped tenon ground Slot size b1 of the machine 10 mm | 375365 10 |
| Stepped tenon ground Slot size b1 of the machine 28 mm | 375365 28 |
| Clamping claw Type CS | 361165 CS |
| ZeroClamp clamping stud with internal thread Type 18M16/138 | 360025 18M16/138 |
| ZeroClamp clamping stud with internal thread Type 18M16 | 360025 18M16 |
| Stepped tenon ground Slot size b1 of the machine 18 mm | 375365 18 |
| Stepped tenon ground Slot size b1 of the machine 12 mm | 375365 12 |
| Clamping claw Type CS1 | 361165 CS1 |
| Stepped tenon ground Slot size b1 of the machine 22 mm | 375365 22 |
| Clamping claw Type CS0 | 361165 CS0 |
| Stepped tenon ground Slot size b1 of the machine 24 mm | 375365 24 |
| Stepped tenon ground Slot size b1 of the machine 14 mm | 375365 14 |