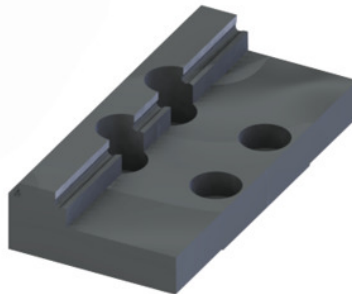




Stepped jaw coated , for T-Rex / Centro Gripp movable, for type: 125



Order data

Order number	361215 125
GTIN	4250364401449
Item class	34A

Description

Application:

For clamping parallel pre-machined components.

Material:

Hardened steel, **coated clamping faces** for high friction values, **increased gripping power by a factor of at least 1.5** (typical hardness 80 HRC).

Suitable for :

Movable jaws for T-Rex No. 361202 and Centro Gripp No. 361180.

Jaw width b: 124.4 mm

Jaw height h: 26 mm

Height h_1 : 14 mm

Step s: 5 mm

e: 21 mm

Clamping width S3: 9 – 67 / 9 – 162 mm

Technical description

Clamping width S3	9 – 67 / 9 – 162 mm
Jaw height h	26 mm
Height h_1	14 mm

Jaw width b	124.4 mm
for type	125
Clamping width S4	48 – 114 / – mm
Clamping width S5	100 – 183 / 102 – 256 mm
suitable for colour code	Centro Gripp
suitable for colour code	T-Rex
Step s	5 mm
e	21 mm
Type of product	Vice - jaw