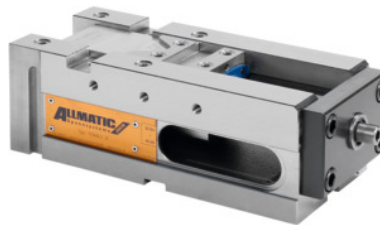




## NC high pressure vice TITAN 2, Type: 125K



### Order data

Order number	361302 125K
GTIN	4250364402361
Item class	34A

### Description

#### Version:

#### Feature:

Clamps for the modular clamping system.

**Increased force travel for secure clamping of blanks in combination with a pull-down function.**

Jaws secured with M12 socket head screws.

8 mm lost clearance when pulled down, 3 mm for Gripp.

Clamping can be achieved close to the neutral line.

Jaws are compatible with earlier models.

Outlet for chips and coolant. Precise location slots.

Tapped holes for component backstop and for extension.

Maximum clamping force 40 kN.

Slides induction hardened. Side, top and bottom faces ground.

#### Feature:

Can be installed vertically.

#### Advantage:

Precise and powerful multi-function high-pressure vice.

- **Reliable clamping of blank parts, thanks to the extra long stroke of the high-pressure spindle.**
- **Precision machined finished parts, base body machined all round.**

#### Function:

**Clamping exclusively with adjustable torque wrench(maximum 30 Nm).**

Using special high pressure spindle and mechanical power intensifier.

#### Application:

**For conventional clamping, grip clamping and pull-down clamping.** Clamping of **flame-cut and saw-cut blanks** by **hardened replaceable gripper elements piercing** into the workpiece. Suitable for all materials up to tensile strength of 1000 N/mm<sup>2</sup>. Can be used horizontally or laterally.

**Supplied with:**

3 hexagon L-wrenches, bi-hex socket 14 AF, 4 stepless adjustable clamps.

**Optional extras:**

- **Jaws No. 361331 – 361970.**
- **Torque wrench No. 656050 size 60.**
- **Quick-change system for jaws No. 362635 size 3**

**Note:**

Clamp capacity extension available using base body No. 360420 size 125.

Weight: 22 kg

Overall length L: 318 mm

Base body length a: 280 mm

Base body width B: 126 mm

Base body height c: 100 mm

f: 21 mm

## Technical description

Colour code for suitable accessories	Titan 2
Longitudinal slot	20 mm
Cross-slot	20 mm
Base body length a	280 mm
f	21 mm
r	77 mm
Base body width B	126 mm
m	139 mm
Type	125K
g	24 mm
Weight	22 kg
Overall length L	318 mm
Base body height c	100 mm
Series	Titan 2
Type of product	Machine vice

## Accessories

Gripp insert carbide height 7.1 - 8.6 mm Type	361242
Carrier jaw movable rigid for type 125	361340 125
Gripp insert with 4 spikes height 3.7 - 5.2 mm Type	361241
5-face jaws for type FIX	361361 FIX
Pull-down set case for type 2	361346 2
Carrier jaw movable pivoting for type 125	361336 125
Gripp insert with 2 spikes, height 5.2 – 6.7 mm Type	361240
Stepped jaw for gripp inserts fixed for type 125	361348 125
Stepped jaw for gripp inserts movable for type 125	361347 125
Extension base for type 125K	361230 125K
Reduced-width hard gripper jaw, 64 mm movable for type 125	361355 125
Gripp insert with 2 spikes, height 3.7 – 5.2 mm Type	361238
Reduced-width jaw movable for type 125	361353 125
Workpiece back-stop 3-dimensional Type 125	360435 125
Reduced-width hard gripper jaw, 64 mm fixed for type 125	361356 125
Carrier jaw fixed for type 125	361331 125
Case set for 5-face jaw	361365
5-face jaws for type MOBIL	361361 MOBIL
Gripp insert height 5.5 mm round Type	361250
Clamping insert with coating, height 5.2 – 6.7 mm smooth Type	361245
Component backstop	360555
Reduced-width jaw fixed for type 125	361354 125
Pull-down set case for type 1	361346 1