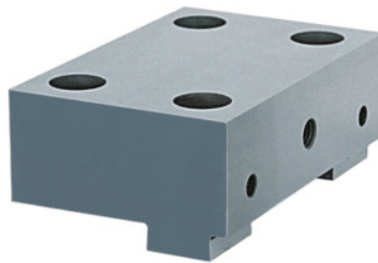




Base jaw fixed, for type: 125



Order data

Order number	361520 125
GTIN	4250364401159
Item class	34A

Description

Version:

Fixed jaw.

Application:

- For fitting all high pressure jaws No. 362390 to 362600.
- For fitting parallel inserts No. 361950; 361960; 361970.

Material:

Hardened steel, ground surfaces.

Suitable for :

NC8, Garant-NC, Titan.

Supplied with:

Fastening screws.

Jaw width b: 124.4 mm

Jaw height h: 39.5 mm

Jaw length l: 88 mm

for type: 125

suitable for colour code: Titan

suitable for colour code: HiPo

Technical description

Jaw length l	88 mm
suitable for colour code	Titan

suitable for colour code	HiPo
suitable for colour code	Titan 2
suitable for colour code	TC
suitable for colour code	LC
suitable for colour code	LC-GARANT
suitable for colour code	LCV125G
suitable for colour code	NC8
suitable for colour code	HOLEX NC
Jaw height h	39.5 mm
Jaw width b	124.4 mm
for type	125
Type of product	Vice - jaw