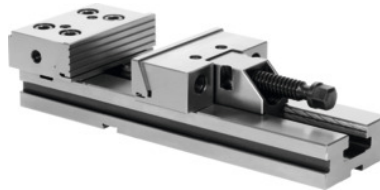




Modular vice, Jaw width A: 125 mm



Order data

Order number	362110 125
GTIN	4045197708229
Item class	32P

Description

Version:

- Machine vice with pull-down jaws.
- Simple mechanical actuation (up to 3.5 t).
- Easy adjustment of jaw opening.
- Case-hardened HRC 60.
- Parallelism 0.02 mm.

Supplied with:

Component backstop, 2 T-nuts similar to No. 362160 size 18/16, 1 clamping wrench, 1 L-wrench for hexagon socket screws, 4 clamping claws.

Note:

See No. 362160 for other T-nuts.

Weight: 18.5 kg

Overall length L: 345 mm

Clamping range b: 150 mm

Base body height G: 40 mm

Jaw height C: 40 mm

Longitudinal tenon slot l: 16 mm

Technical description

Colour code for suitable accessories	Modular HOLEX 125
Base body height G	40 mm
Transverse tenon slot n	16 mm

Clamping range b	150 mm
Weight	18.5 kg
Longitudinal tenon slot l	16 mm
Overall length L	345 mm
Jaw width A	125 mm
Jaw height C	40 mm
Type of product	Machine vice

Accessories

Square top jaw (piece) for jaw width 125 mm	362132 125
Pair of T-nuts T-slot dimension B / keyway 12/16 mm	362160 12/16
Smooth front jaw, soft (piece) for jaw width 125 mm	362148 125
Pair of T-nuts T-slot dimension B / keyway 16/16 mm	362160 16/16
Longitudinally serrated front jaw (piece) for jaw width 125 mm	362146 125
Pair of T-nuts T-slot dimension B / keyway 18/16 mm	362160 18/16
Pair of T-nuts T-slot dimension B / keyway 14/16 mm	362160 14/16
Prismatic jaw (piece) for jaw width 125 mm	362127 125
Smooth front jaw, hard (piece) for jaw width 125 mm	362147 125
Pair of T-nuts T-slot dimension B / keyway 20/16 mm	362160 20/16