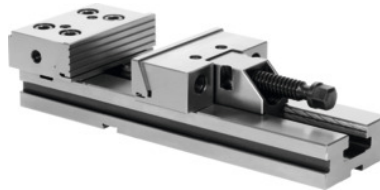




Modular vice, Jaw width A: 150/3 mm



Order data

Order number	362110 150/3
GTIN	4045197708243
Item class	32P

Description

Version:

- Machine vice with pull-down jaws.
- Simple mechanical actuation (up to 3.5 t).
- Easy adjustment of jaw opening.
- Case-hardened HRC 60.
- Parallelism 0.02 mm.

Supplied with:

Component backstop, 2 T-nuts similar to No. 362160 size 18/16, 1 clamping wrench, 1 L-wrench for hexagon socket screws, 4 clamping claws.

Note:

See No. 362160 for other T-nuts.

Weight: 37.5 kg

Overall length L: 520 mm

Clamping range b: 300 mm

Base body height G: 50 mm

Jaw height C: 50 mm

Longitudinal tenon slot l: 16 mm

Technical description

Weight	37.5 kg
Jaw height C	50 mm
Base body height G	50 mm

Overall length L	520 mm
Jaw width A	150 mm
Clamping range b	300 mm
Colour code for suitable accessories	Modular HOLEX 150
Longitudinal tenon slot l	16 mm
Transverse tenon slot n	16 mm
Type of product	Machine vice

Accessories

Smooth front jaw, hard (piece) for jaw width 150 mm	362147 150
Pair of T-nuts T-slot dimension B / keyway 16/16 mm	362160 16/16
Square top jaw (piece) for jaw width 150 mm	362132 150
Pair of T-nuts T-slot dimension B / keyway 18/16 mm	362160 18/16
Pair of T-nuts T-slot dimension B / keyway 12/16 mm	362160 12/16
Pair of T-nuts T-slot dimension B / keyway 14/16 mm	362160 14/16
Longitudinally serrated front jaw (piece) for jaw width 150 mm	362146 150
Smooth front jaw, soft (piece) for jaw width 150 mm	362148 150
Prismatic jaw (piece) for jaw width 150 mm	362127 150
Pair of T-nuts T-slot dimension B / keyway 20/16 mm	362160 20/16