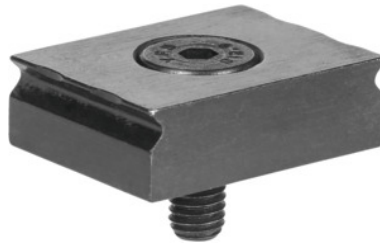




Ultra clamping claw, rectangular, Type: 3



Order data

Order number	370034 3
GTIN	4046368331000
Item class	37M

Description

Version:

- **The contour of the claw generates a slight pull-down force.**
- **The low clamping height saves material.**
- **Higher cutting values due to positive clamping.**

Application:

Ideal for multiple clamping.

For use as a stop in jigs in conjunction with Pitbull clamps No. 370025; 370030 or eccentric clamps No. 370001; 370005; 370008.

Supplied with:

1 clamping claw with screw.

Screw to standard: M5×12

Length L: 19.05 mm

Width B: 25.4 mm

Height H: 7.92 mm

Ø D₁: for M5

recommended clamping height: 1.5 - 3 mm

Technical description

Width B	25.4 mm
recommended clamping height	1.5 - 3 mm
Length L	19.05 mm

Height H	7.92 mm
Ø D ₁	for M5
Screw to standard	M5×12
Standard	DIN 7984
Type of product	Jig clamping system