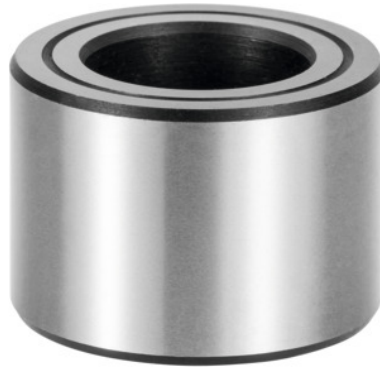


**Floating bushing, Type × length l1: 16X20 mm****Order data**

Order number	370109 16X20
GTIN	4045197949509
Item class	31E

Description**Application:**

The plate to be clamped is equipped with **two central bushings** and **two floating bushings**, so as to achieve optimum repetition accuracy.

Material:

Case-hardened steel

Note:

Specification of the mounting bore, height ± 0.05 mm and \varnothing H7.

\varnothing d₁: 16.8 mm

\varnothing d₂ n6: 25 mm

Technical description

\varnothing d ₂ n6	25 mm
\varnothing d ₁	16.8 mm