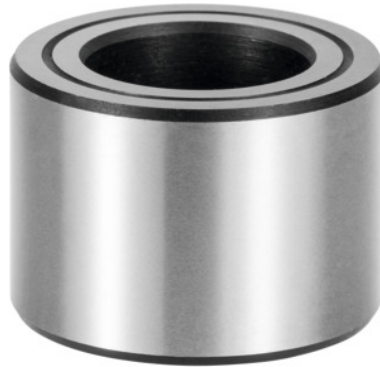


**Floating bushing, Type × length I1: 20X20 mm****Order data**

Order number	370109 20X20
GTIN	4045197949523
Item class	31E

Description**Application:**

The plate to be clamped is equipped with **two central bushings** and **two floating bushings**, so as to achieve optimum repetition accuracy.

Material:

Case-hardened steel

Note:

Specification of the mounting bore, height ± 0.05 mm and \varnothing H7.

\varnothing d₁: 20.8 mm

\varnothing d₂ n6: 35 mm

Technical description

\varnothing d ₁	20.8 mm
\varnothing d ₂ n6	35 mm