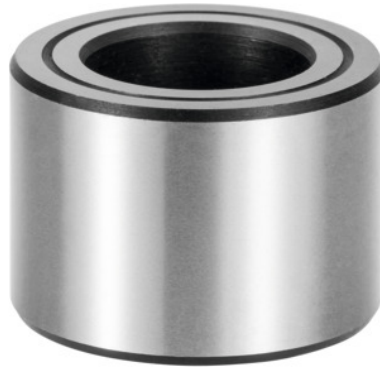


**Floating bushing, Type × length l1: 20X25 mm****Order data**

|              |               |
|--------------|---------------|
| Order number | 370109 20X25  |
| GTIN         | 4045197949530 |
| Item class   | 31E           |

**Description****Application:**

The plate to be clamped is equipped with **two central bushings** and **two floating bushings**, so as to achieve optimum repetition accuracy.

**Material:**

Case-hardened steel

**Note:**

Specification of the mounting bore, height  $\pm 0.05$  mm and  $\varnothing$  H7.

$\varnothing$  d<sub>1</sub>: 20.8 mm

$\varnothing$  d<sub>2</sub> n6: 35 mm

**Technical description**

|                                 |         |
|---------------------------------|---------|
| $\varnothing$ d <sub>1</sub>    | 20.8 mm |
| $\varnothing$ d <sub>2</sub> n6 | 35 mm   |