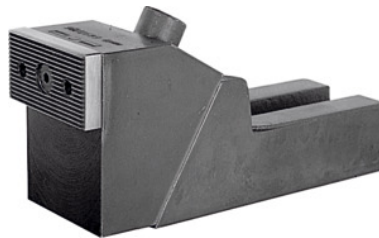




Heavy-duty clamping jaw, Jaw width: 90 mm



Order data

Order number	375130 90
GTIN	4020772073237
Item class	35A

Description

Version:

Very sturdy, high version with strong pull-down and clamping forces. The angled clamping mechanism ensures that the component is securely clamped down on to the table. The interchangeable jaws are reversible, the smooth side for machined, the serrated side for unmachined components.

Application:

For lateral clamping of high components with high clamping force.

Material:

Basic body made of malleable cast iron, jaws case-hardened.

Maximum height: 145 mm

Minimum height: 120 mm

Slot width: 38 mm

Clamping range: 15 mm

overall length: 265 mm

Width across flats: 17 mm

Technical description

Jaw width	90 mm
Clamping range	15 mm
overall length	265 mm

Intermediate height h_1	56 mm
Slot width	38 mm
Maximum height	145 mm
Width across flats	17 mm
for slot width a	32 mm
for slot width a	36 mm
for slot width a	42 mm
Minimum height	120 mm
Type	6497
Type of product	Side clamps