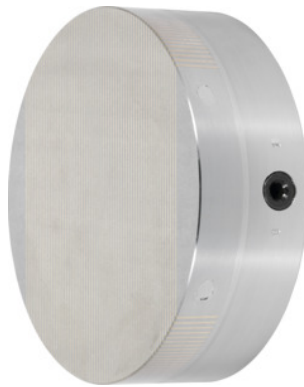




## Permanent magnetic chuck, with parallel pole distribution, Chuck Ø: 100 mm



### Order data

Order number	380776 100
GTIN	2050001943620
Item class	33S

### Description

#### Version:

Powerful magnetic system with **neodymium** magnets and low magnetic field height.

**Continuously adjustable** magnetic force.

#### Application:

For clamping small and thin to medium workpieces.

For grinding and turning.

#### Note:

The centre can be bored out to size "J".

Height: 50 mm

Height tolerance: 0 / -1 mm

Pitch circle Ø: 85 mm

Thread Ø: 4×M8

Magnetic field height: 8 mm

Weight: 3 kg

### Technical description

Parallel pole distribution	1.9 mm
----------------------------	--------

Height tolerance	0 / -1 mm
Pitch circle Ø	85 mm
Height	50 mm
Centring hole depth	4 mm
Nominal clamping force	70 N/cm <sup>2</sup>
Magnetic field height	8 mm
Centre Ø	60 mm
Chuck Ø	100 mm
Weight	3 kg
possible to bore out to centre hole "J"	20×14 mm
Thread Ø	4×M8
Grinding allowance in pole area	5 mm
Type of product	Magnetic clamping chuck