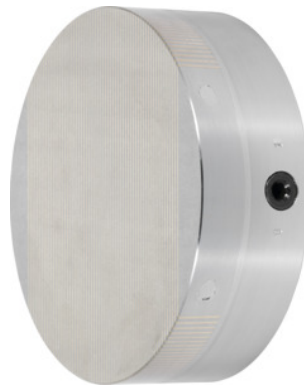




Permanent magnetic chuck, with parallel pole distribution, Chuck Ø: 250 mm



Order data

Order number	380776 250
GTIN	2050001943668
Item class	33S

Description

Version:

Powerful magnetic system with **neodymium** magnets and low magnetic field height.

Continuously adjustable magnetic force.

Application:

For clamping small and thin to medium workpieces.

For grinding and turning.

Note:

The centre can be bored out to size "J".

Height: 57 mm

Height tolerance: 0 / -1 mm

Pitch circle Ø: 192 mm

Thread Ø: 4xM8

Magnetic field height: 8 mm

Weight: 20 kg

Technical description

Pitch circle Ø	192 mm
----------------	--------

Parallel pole distribution	1.9 mm
Nominal clamping force	100 N/cm ²
Height tolerance	0 / -1 mm
Magnetic field height	8 mm
Grinding allowance in pole area	5 mm
Centring hole depth	4 mm
Weight	20 kg
Chuck Ø	250 mm
Height	57 mm
Thread Ø	4×M8
possible to bore out to centre hole "J"	250×5 mm
Centre Ø	250 mm
Type of product	Magnetic clamping chuck