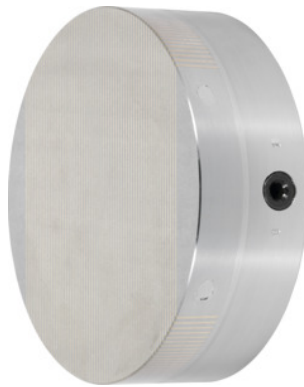


**Permanent magnetic chuck, with parallel pole distribution, Chuck Ø: 300 mm****Order data**

Order number	380776 300
GTIN	2050001943675
Item class	33S

Description**Version:**

Powerful magnetic system with **neodymium** magnets and low magnetic field height.

Continuously adjustable magnetic force.

Application:

For clamping small and thin to medium workpieces.

For grinding and turning.

Note:

The centre can be bored out to size "J".

Height: 62 mm

Height tolerance: 0 / -1 mm

Pitch circle Ø: 227 mm

Thread Ø: 4xM8

Magnetic field height: 8 mm

Weight: 31 kg

Technical description

Magnetic field height	8 mm
-----------------------	------

Weight	31 kg
Chuck Ø	300 mm
Height tolerance	0 / -1 mm
Centring hole depth	4 mm
Height	62 mm
Thread Ø	4×M8
Pitch circle Ø	227 mm
possible to bore out to centre hole "J"	300×5 mm
Parallel pole distribution	1.9 mm
Grinding allowance in pole area	5 mm
Centre Ø	250 mm
Nominal clamping force	100 N/cm ²
Type of product	Magnetic clamping chuck