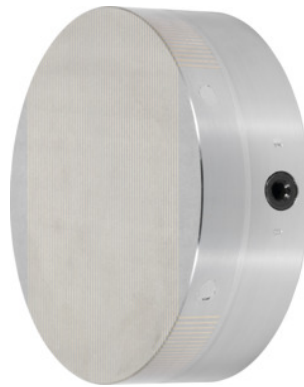




Permanent magnetic chuck, with parallel pole distribution, Chuck Ø: 350 mm



Order data

Order number	380776 350
GTIN	2050001943682
Item class	33S

Description

Version:

Powerful magnetic system with **neodymium** magnets and low magnetic field height.

Continuously adjustable magnetic force.

Application:

For clamping small and thin to medium workpieces.

For grinding and turning.

Note:

The centre can be bored out to size "J".

Height: 62 mm

Height tolerance: 0 / -1 mm

Pitch circle Ø: 293 mm

Thread Ø: 4×M8

Magnetic field height: 8 mm

Weight: 43.8 kg

Technical description

Thread Ø	4×M8
----------	------

Weight	43.8 kg
Grinding allowance in pole area	5 mm
Chuck Ø	350 mm
Parallel pole distribution	1.9 mm
Height	62 mm
Nominal clamping force	100 N/cm ²
Pitch circle Ø	293 mm
Centring hole depth	5 mm
possible to bore out to centre hole "J"	350×5 mm
Magnetic field height	8 mm
Centre Ø	300 mm
Height tolerance	0 / -1 mm
Type of product	Magnetic clamping chuck