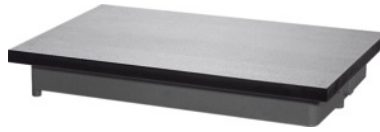


**Scribing and marking out plate, Length×Width: 300X300 mm****Order data**

Order number	431510 300X300
GTIN	4045197234032
Item class	46H

Description**Version:**

In stable ribbed design, of dense, aged special grey cast iron. **With scraped surface finish.** Unmachined faces are enamel painted (RAL 7001 grey). **With cast-in support points.**

Standard:

Genauigkeit DIN 876/1 geschabt.

Optional extras:

Engineer's blue No. 085388.

Note:

Accessories such as handles and set-up elements available on request. Other sizes are available from our manufacturer. Carriage forward, delivery by truck.

Standard: DIN 876/1

Flatness tolerance: 0.013 mm

Overall height: 60 mm

Weight: 14 kg

Technical description

Flatness tolerance	0.013 mm
Overall height	60 mm
Weight	14 kg
Standard	DIN 876/1
Type of product	Scribing and marking out plate

Services

Labelling laser-etched Type

018940

Accessories

Engineer's blue – tube Colour BLUE

085388 BLUE