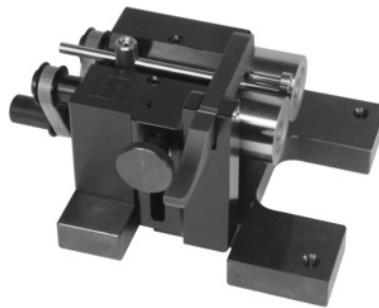


**Bench centre RPG, for maximum workpiece Ø: 30 mm****Order data**

Order number	443300 30
GTIN	2050001944719
Item class	46L

**Description****Version:**

Robust design with pre-loaded roller bearings.

Type RPG for inspections in series production with 2 pivoting holders and 1 measuring slide (apart from size 30).

**Application:**

For inspection tasks on external, internal, and flat faces of rotating parts. Due to the compact design particularly suitable for use on shadowgraphs, optical coordinate measuring machines and contour measurement gauges.

**Accuracy:**

Concentricity **0.002 mm**.

**Supplied with:**

Key and oilstone (without dial indicator).

**Optional extras:**

Cross slide for measurement of flat surfaces.

Measurement slide with centres or coated rollers.

Jointed arm with measuring tool mount.

Carbide-coated rollers.

Electrical drive with variable transformer.

Pneumatic pivoting arm with tensioning roller.

**Note:**

All types are available on request with a different type of roller (grooved rollers or cylindrical rollers).

Roller type: cylindrical rollers  
for workpiece Ø: 3 - 30 mm  
Footprint length: 120 mm  
Baseplate width: 120 mm  
Roll Ø: 30 mm  
Weight: 10.5 kg

## Technical description

Roller type	cylindrical rollers
Weight	10.5 kg
Footprint length	120 mm
for workpiece Ø	3 - 30 mm
Baseplate width	120 mm
Roll Ø	30 mm
for maximum workpiece Ø	30 mm
Type of product	Radial and axial run-out tester, centreless