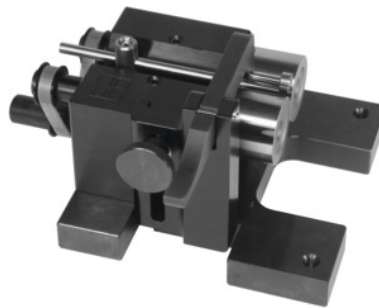


**Bench centre RPG, for maximum workpiece Ø: 40 mm****Order data**

Order number	443300 40
GTIN	2050001944726
Item class	46L

**Description****Version:**

Robust design with pre-loaded roller bearings.

Type RPG for inspections in series production with 2 pivoting holders and 1 measuring slide (apart from size 30).

**Application:**

For inspection tasks on external, internal, and flat faces of rotating parts.

**Accuracy:**

Concentricity **0.002 mm.**

**Supplied with:**

Key and oilstone (without dial indicator).

**Optional extras:**

Cross slide for measurement of flat surfaces.

Measurement slide with centres or coated rollers.

Jointed arm with measuring tool mount.

Carbide-coated rollers.

Electrical drive with variable transformer.

Pneumatic pivoting arm with tensioning roller.

**Note:**

All types are available on request with a different type of roller (grooved rollers or cylindrical rollers).

Roller type: grooved rollers

for workpiece Ø: 2 - 40 mm

Footprint length: 400 mm  
Baseplate width: 160 mm  
Roll Ø: 55 mm  
Weight: 11 kg

---

## Technical description

Roll Ø	55 mm
Weight	11 kg
for maximum workpiece Ø	40 mm
Roller type	grooved rollers
Footprint length	400 mm
Baseplate width	160 mm
for workpiece Ø	2 - 40 mm
Type of product	Radial and axial run-out tester, centreless