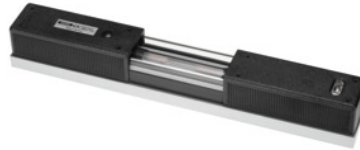




Shaft spirit level, Base Length×Accuracy: 300/2 mm



Order data

Order number	468810 300/2
GTIN	4030616406305
Item class	46U

Description

Version:

Sturdy housing of high quality special casting; hammer finish. Vee base with ground contact surfaces in the angle (important for marking out, aligning, etc.). All measuring faces are exactly parallel to the axis of the vial. One longitudinal and one transverse vial each of glass. With insulated handles on the housing and protective glass over the vials.

Thermal insulation over the entire body protects against the effects of the heat of hands or breath. Recess in the body permits a side view of the vial.

Application:

For aligning surfaces, shafts, machines etc.

Standard:

DIN 877

Accuracy:

1 = with very high sensitivity longitudinal vial **0.02 mm/m.**

2 = with high sensitivity longitudinal vial **0.1 mm/m.**

4 = with normal sensitivity longitudinal vial **0.4 mm/m.**

Note:

Magnetic version available on request.

Calibration: H2

Scale divisions: 0.1 mm/m

Sole width: 42 mm

Technical description

Accuracy class	2
----------------	---

Sole width	42 mm
Scale divisions	0.1 mm/m
Sole length	300 mm
Standard	DIN 877
Packaging	sturdy box
Calibration	H2
Type of product	Shaft spirit level

Services

Calibration Engineer's level / electronic clinometer Accuracy 0,10 mm/m	016230 0,10
Labelling laser-etched Type	018940
Calibration Engineer's level / electronic clinometer Accuracy 0,10 mm/m	026620 0,10