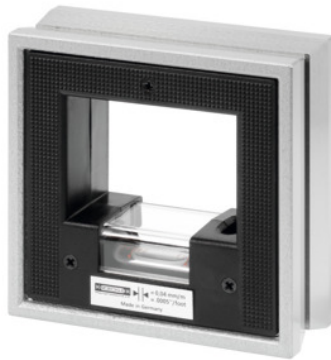




## Square type spirit level, Base Length×Accuracy: 100/2 mm



### Order data

Order number	469210 100/2
GTIN	4030616426105
Item class	46U

### Description

#### Version:

Sturdy frame of high quality special casting; hammer finish. 3 sides Vee ground, 1 side flat. One longitudinal and one transverse vial each of glass. The sensitivity (scale value) of the longitudinal vial is specified on the square.

Thermal insulation over the entire body protects against the effects of the heat of hands or breath. Recess in the body permits a side view of the vial.

#### Application:

For aligning horizontal and vertical faces, shafts etc. and for accurate alignment at a 90° angle.

#### Standard:

#### DIN 877

#### Accuracy:

1 = with very high sensitivity longitudinal vial **0.02 mm/m**.

2 = with high sensitivity longitudinal vial **0.1 mm/m**.

#### Note:

Magnetic version available on request.

Calibration: H1

Scale divisions: 0.1 mm/m

Sole width: 34 mm

## Technical description

Scale divisions	0.1 mm/m
Sole length	100 mm
Accuracy class	2
Sole width	34 mm
Standard	DIN 877
Packaging	sturdy box
Calibration	H1
Type of product	Square frame level

## Services

Labelling laser-etched Type	018940
Calibration Square frame level Accuracy 0,10 mm/m	016200 0,10
Calibration Square frame level Accuracy 0,10 mm/m	026600 0,10