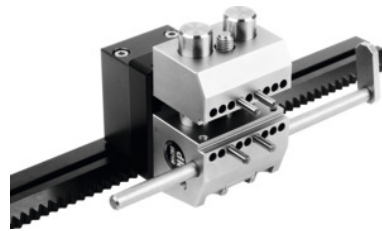




Extension set, Type: S



Order data

Order number	494470 S
GTIN	2050001670656
Item class	49K

Description

Version:

Modular, flexible, and versatile sets of high quality aluminium components. All construction sets are specifically extendable.

Horizontal and vertical mounting on the rack rail (does not include attachment set No. 494475).

Precision vice with offset jaws and exchangeable guide pillars for extending the clamping range.

Supplied with:

Including 8 parallel pins (of which 4 are offset) for pin clamping, adjustable stop with scale, separate pillar set.

Clamping range: 0 - 75 mm

Jaw width: 50 mm

Technical description

Clamping range	0 - 75 mm
Jaw width	50 mm
Type of product	Extension clamping set for measuring machines

Accessories

Attachment set for No. 494470 / 494471

494475