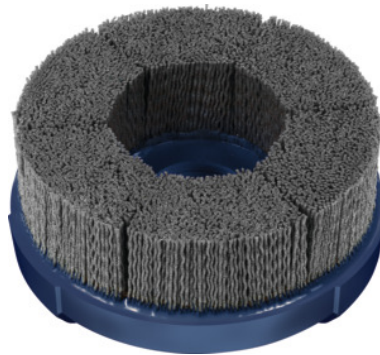


**Garant****Disc brush, silicon carbide (SiC), Ø 119 mm, Grit: 120****Order data**

Order number	575015 120
GTIN	4045197892676
Item class	51P

**Description****Version:**

With longitudinal groove for clamping on face mill arbors (DIN 6357) and combination face mill adapters (DIN 6358).

Disc brushes with **extremely tightly packed abrasive bristles (right to the edge of the brush)** embedded in the plastic pad. The bristles support each other, giving a **highly stable shape**. Very long working life.

Nylon bristles with very high **silicon carbide grit content** for general-purpose use.

**Advantage:**

- **Workpiece rework directly after the machining process.**
- **Reproducible results due to constantly exposed grinding grit.**
- **Good process reliability thanks to high shape stability and shape accuracy.**
- **Quick and secure installation without further accessories.**
- **Very low radial run-out.**

**Application:**

On **CNC machining centres** and when used by **robots**, preferably **wet grinding** with cooling lubricant. Machining of flat components: precise **deburring, edge rounding, finish machining** after milling, **surface finishing** e.g. of sealing and mating faces.

**Note:**

Special versions available on request.

Grinding medium code: SiC

Bore  $\varnothing d_1$ : 27 with groove mm  
 Grit designation: medium  
 Bristle thickness: 1.1 mm

## Technical description

Bristle thickness	1.1 mm
Grit	120
Grit designation	medium
Feed	3500 - 6500 mm/min
Infeed	0.8 (fine) – 1.5 (coarse) mm
Product name attribute	$\varnothing$ 119 mm
Brush $\varnothing D_1$	119 mm
Disc dia. $D_2$	125 mm
Grinding media	Silicon carbide (SiC)
Grinding medium code	SiC
Bristle length $L_3$	38 mm
Working area $\varnothing$	119 mm
Bore $\varnothing d_1$	27 with groove mm
recommended speed	1100 - 1400 rpm
maximum speed	3000 rpm
Type of product	Disc brush

## Accessories

Tightening screw with internal cooling for mandrel  $\varnothing$  27 mm

575096 27